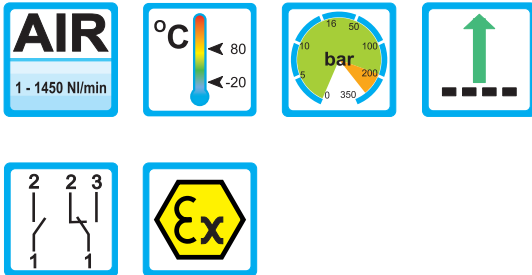


Flow Monitor

DWM-L



Range of Application

Operation

- Float measuring principle

Application

- Cooling systems and cooling circuits
- Mechanical engineering
- Medicine technology
- Pharma industry
- Chemical industry
- Research and development

Features

- High reliability
- High switch accuracy
- Wide switch range
- Infinitely variable switchpoint adjustment through user
- EX-version to ATEX available
- High pressure resistance
- Threaded connection, special threads on request

Installation hints

- The operating instructions for DWM-L must be observed!
- Download: www.meister-flow.com

Operating data

| | |
|-------------------------|--|
| Operating pressure max. | 200 bar (Brass) 300 bar (Stainless steel) |
| Pressure drop | 0,02 - 0,4 bar |
| Maximum temperature | 80 °C |
| Accuracy | ±10 % of full scale |

Measuring Ranges

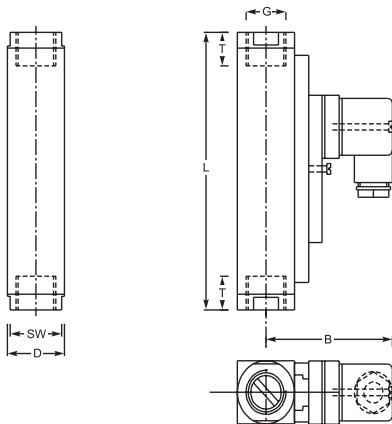
| Type | Switch range for Air at 1 bar abs. and 20 °C ⁽¹⁾ | | |
|----------|---|--------------|------------|
| | [NI/min] | [SCFH] | [SCFM] |
| DWM-L1,5 | 1 - 28 | 2,0 - 59,0 | |
| DWM-L3 | 4 - 60 | 8,0 - 127,0 | |
| DWM-L8 | 6 - 160 | 15,0 - 340,0 | |
| DWM-L12 | 20 - 240 | 40,0 - 510,0 | |
| DWM-L18 | 40 - 360 | 80,0 - 760,0 | |
| DWM-L50 | 60 - 700 | | 2,0 - 24,5 |
| DWM-L100 | 200 - 1450 | | 7,0 - 51,0 |

¹⁾ The specified data are switch-off points, other switch ranges on request.

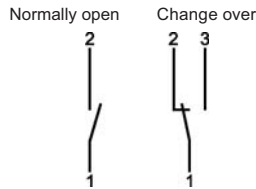


Technical Data

Mechanical drawing



Connection diagram



Summary of types

| Type: | Overall dimensions [mm] | | | | | | | Weight approx. ca. [g] |
|-----------------|-------------------------|----|----|------|----|----|-----|------------------------|
| | SW | D | B | G | DN | T | L | |
| DWM-L1,5 | | | | 1/4" | 8 | 14 | | |
| DWM-L3 | 27 | 30 | 71 | 3/8" | 10 | 19 | 131 | 800 |
| DWM-L8 | | | | 1/2" | 15 | 19 | | |
| DWM-L12 | | | | | | | | |
| DWM-L18 | 27 | 30 | 71 | 1/2" | 15 | 19 | 146 | 850 |
| | 32 | 35 | | 3/4" | 20 | 17 | 174 | 960 |
| DWM-L50 | 34 | 40 | 76 | 3/4" | 20 | 18 | 152 | 1350 |
| | 40 | 40 | | 1" | 25 | 19 | 156 | 1050 |
| DWM-L100 | 50 | 50 | 81 | 1" | 25 | 20 | 200 | 2750 |

Electrical Data

Change over 250V • 1,5A • 50VA ⁽²⁾

Normally open 250V • 3A • 100VA

ATEX II 2 G Ex mb II T6 & ATEX II 2 D Ex tD A21 IP67 T80 °C

ATEX II 2 G Ex mb II T5 & ATEX II 2 D Ex tD A21 IP67 T100 °C

Change over 250V • 1A • 30VA

Normally open 250V • 2A • 60VA

Change over M 12x1 (-20 °C - 85 °C) 250V • 1,5A • 50VA ⁽²⁾

Normally open M 12x1 (-20 °C - 85 °C) 250V • 3A • 100VA

Change over SPS 250V • 1A • 60VA

Ingress Protection:

IP65: plug connection DIN 43650 Form A

IP67: 1 m sealed in cable, (with EEx-version 2 m)
or plug connection M 12x1

Output Signal

The contact opens / changes when the flow decreases below the set point.

Power supply

Not required (potentialfree reed contacts)

Plug types

Other plug types or cable lengths on request

⁽²⁾ Minimum load 3 VA

Material

Brass Version

Wetted parts:

Float: POM

Gaskets: NBR

(optional FKM, EPDM) ⁽³⁾

Brass

Threaded rings:
(only DWM-L-50, -100 (1"))

Centering washer:
(DWM-L-50) Brass nickel-plated

Fittings: Brass nickel-plated

(not for DWM-L-50, -100 (1"))

All other wetted parts: Brass nickel-plated

Stainless Steel

Wetted parts:

Float: POM

Gaskets: FKM

(optional NBR, EPDM) ⁽³⁾

Threaded rings: 1.4571

(only DWM-L-50, -100 (1"))

Centering washer: 1.4571

(DWM-L-50)

Fittings: 1.4571

(not for DWM-L-50, -100 (1"))

All other wetted parts: 1.4571

⁽³⁾ Other gaskets materials on request

